

Equipment	Decontamination Method by Risk Level for Terrestrial Activities and Equipment			Equipment Needed	Estimated Time
	Low	Medium	High		
Clothing	Visually inspect before entering or leaving the field. Remove dirt, mud, seeds, and debris from clothes, socks, shoes, etc., between sites.			Adhesive roller, hoof-pick, boot brush	5 minutes
Vehicle or ATV	Inspect and clean vehicle exterior including truck beds, cargo and tool boxes.	Inspect and clean vehicle interior and exterior including truck beds and cargo. Remove dirt, mud, seeds and debris. Sweep out vehicle interior on site.	Follow steps for medium risk. Wash vehicle, including undercarriage. Thoroughly clean interior and exterior upon return to office.	Broom, vacuum, leaf blower, air compressor, pressure washer or car wash	5-30 minutes
Mowers, Tractors, and Heavy Equipment	Visually inspect before entering and upon leaving a field or site. Remove seeds and debris. Run fans in reverse, if possible to clean air intakes.	Follow steps for low risk. Visually inspect mower decks, tires, engine housing and undercarriage. Remove seeds, plant material and mud or dirt. Before and after moving between sites, use compressed air or leaf blower to thoroughly remove debris if necessary.	Follow steps for medium risk. Thoroughly clean equipment and vehicle exterior with pressure washer.	Broom, shovel, leaf blower, air compressor, pressure washer	5-120 minutes
Hand tools and light equipment (shovels, chainsaws, etc.)	Visually inspect and brush clean.	Follow steps for low risk. Use compressed air, a leaf blower, or rinse/spray mud and debris from tools/equipment. Always follow manufacturer's directions for cleaning equipment.		Brush, air compressor, pressure washer, leaf blower	5-10 minutes

**Emergency situations (e.g. wildland fires) may preclude the use of high level decontamination and work in highly valued sites (e.g. protected areas) may require additional decontamination. Managers should use best professional judgment and provide guidance to staff on a situational basis.**

Terrestrial Decontamination Equipment	Instructions for Use
Boot brush <input type="checkbox"/> Adhesive roller <input type="checkbox"/> Screwdriver/hoof pick <input type="checkbox"/> Identification guides <input type="checkbox"/> Broom <input type="checkbox"/> Garbage bags <input type="checkbox"/>	Provided is a list of equipment that you may need to conduct Invasive Species Decontamination in the field. <b>Ensure you have the necessary items before leaving for the field.</b> The table below provides guidance on the appropriate decontamination procedures based on level of risk. <b>For additional guidance on assessing risk level, please see the Forest Resources Division Guidelines and risk table on the flip side of this document.</b>
Heavy Equipment	
Track Shovel <input type="checkbox"/> Air Compressor/Leaf Blower <input type="checkbox"/> Portable Pressure Washer <input type="checkbox"/> Water Source (for Pressure Washer) <input type="checkbox"/>	

Personal Decontamination	Low	Medium	High
Remove seeds, debris, mud from boots & clothing	x	x	x
Launder clothing and footwear		x	x

Vehicle	Low	Medium	High
Inspect vehicle and remove mud & debris	x	x	x
Sweep/vacuum interior of vehicle		x	x
Pressure wash exterior (incl. undercarriage)			x

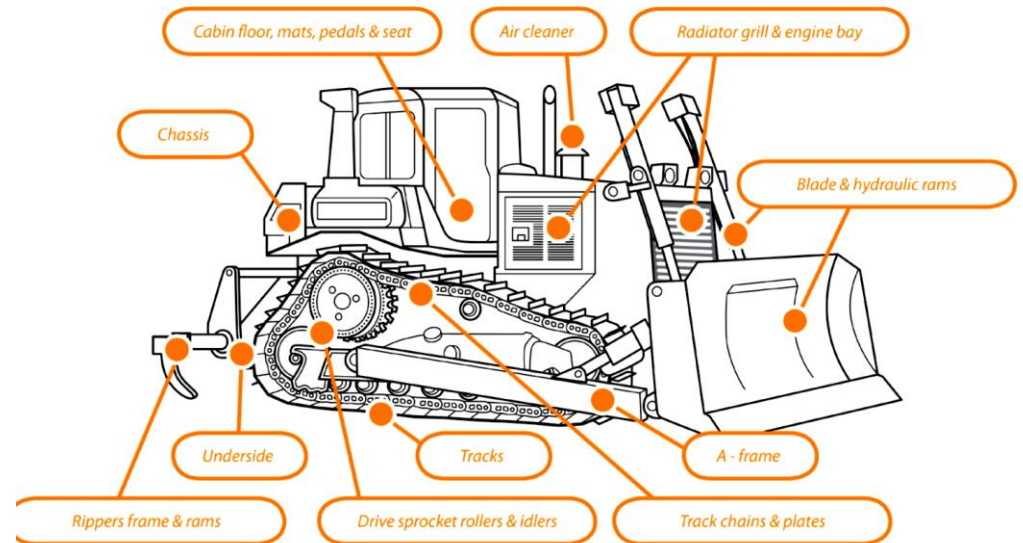
Tractors & Heavy Equipment	Low	Medium	High
Inspect and remove mud and debris	x	x	x
Use leaf blower/air compressor to remove debris		x	x
Pressure wash equipment			x
Run fans in reverse to clean air intakes	x	x	x

Research/Sampling Equipment	Low	Medium	High
Inspect and remove debris from , etc.	x	x	x
Pressure wash equipment		x	x
Use dedicated equipment where possible			x

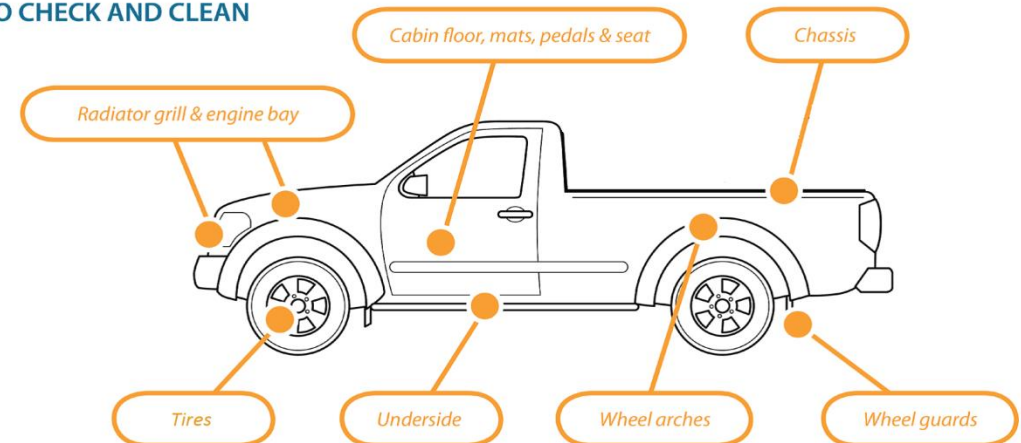
Hand tools and light equipment	Low	Medium	High
Inspect and remove mud and debris	x	x	x
Use leaf blower/air compressor to remove debris		x	x

For additional guidance on working in aquatic environments or fire operations, refer to instructions contained within Aquatic Decontamination Materials. For more information on methods or special situations, refer to the Forest Resources Division Guidelines.

### BULLDOZER WITH KEY SPOTS TO CHECK AND CLEAN



### 4WD VEHICLE WITH KEY SPOTS TO CHECK AND CLEAN



### Additional Resources

Best Control Practice Guides – Information on species ecology, control and treatment

<http://www.michigan.gov/invasivespecies> and click on publications

Midwest Invasive Species Information Network (MISIN) – Resources for identification, species distribution and reporting

<http://www.misin.msu.edu/>

Invasive Species Contact List – Species-specific contacts for information or reporting invasive species occurrences

[http://www.michigan.gov/documents/dnr/Invasive\\_Species\\_Contact\\_Table\\_411161\\_7.pdf](http://www.michigan.gov/documents/dnr/Invasive_Species_Contact_Table_411161_7.pdf)

**Emergency situations (e.g. wildland fires) may preclude the use of high level decontamination and work in highly valued sites (e.g. protected areas) may require additional decontamination. Managers should use best professional judgment and provide guidance to staff on a situational basis.**